



## RUNNING ORDER

SATURDAY + 26 JULY

**1 THE LEGAL BIT** THE SECRET GARDEN, BRISTOL GARDENS, BRIGHTON, BN25

12:30 → ARRIVE  
 13:00 → CEREMONY  
 13:30 → TOASTS  
 14:30 → COACH PICKUP

**2 THE PARTY BIT** BARCOMBE MILLS VILLAGE HALL, BARCOMBE MILLS ROAD, 5BH8N8

15:00 → COCKTAILS  
 16:30 → FOOD & SPEECHES  
 19:00 → BAND & DJS  
 23:30 → SCRAM!

## GETTIN' PLACES

Getting to The Secret Garden is easiest by taxi or bus — Brighton parking isn't fun! There's no dedicated car park, but there are pay-and-display spots in the streets nearby (check the signs). If needed, the Brighton Marina car park is an 18-minute walk away.

Coaches will then take us to Barcombe Mills Village Hall. If you'd rather drive, there's parking at the venue, but it's limited, so please let us know on the RSVP if you plan to drive.

GOTTA BE OUT OF THE VENUE BY 11:30PM.

BOOK YOUR TAXI IN ADVANCE, & TRY TO CAR POOL

BOOK TAXI IN ASAP & CONFIRM ON THE DAY (BEST TO USE BRIGHTON BASED TAXI RINK)



## DRESS CODE

SMART CASUAL

BUT MAKE IT FASHION

## WHERE TO CRASH

Brighton locals, you lucky things - you can skip this bit.

For those making a weekend of it, there are plenty of Airbnbs & B&Bs in Brighton, Lewes (our halfway point), or Barcombe Mills—take your pick!

Feeling adventurous? There are a couple of local campsites with pitches & yurts, let's all collectively pray to the Sun Gods for good weather:

→ [www.yampcamp.co.uk/campsites/barcombe-mills](http://www.yampcamp.co.uk/campsites/barcombe-mills)

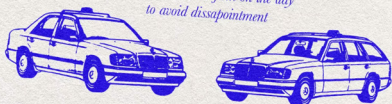
→ [www.boathousefarm.co.uk](http://www.boathousefarm.co.uk)

Sweet dreams, wherever you land x

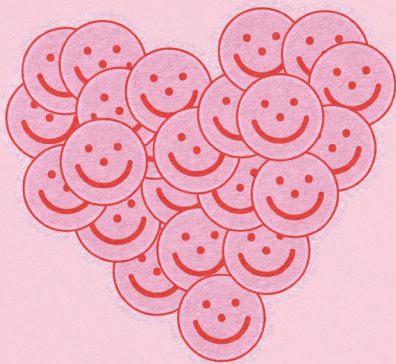
## EXIT PLAN

(0800) BOOK NOW ☎

Book now and confirm on the day to avoid disappointment



Car pool for **BIG SAVINGS**



**WIFE**  
 OF THE PARTY